







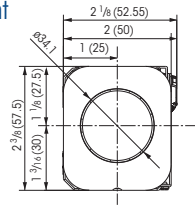




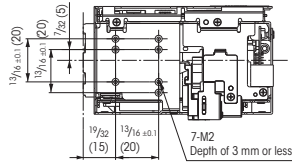


**FCB-EX490E/FCB-EX490EP**

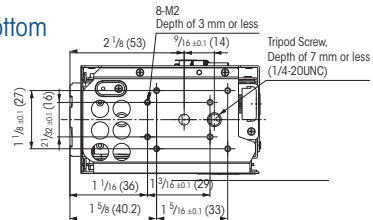
Front



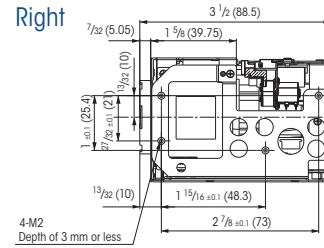
Top



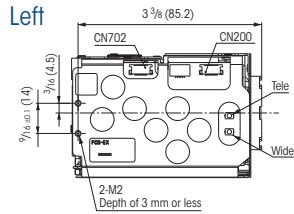
Bottom



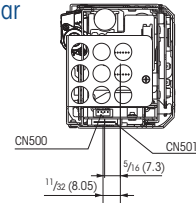
Right



Left



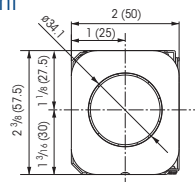
Rear



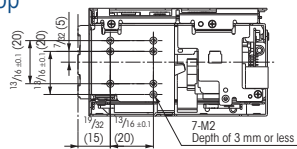
Unit: inches (mm)

**FCB-EX48E/FCB-EX48EP**

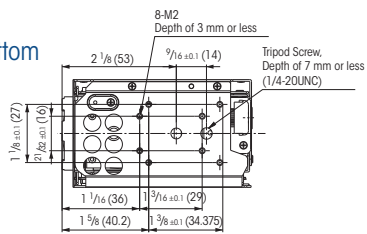
Front



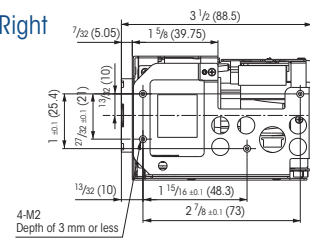
Top



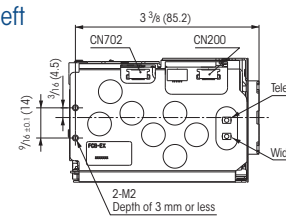
Bottom



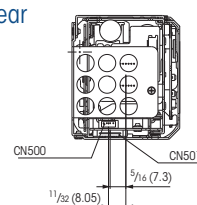
Right



Left



Rear



Unit: inches (mm)

# SPECIFICATIONS

	FCB-EX1020	FCB-EX1020P	FCB-EX995E	FCB-EX995EP	FCB-EX985E	FCB-EX985EP	FCB-EX490E	FCB-EX490EP	FCB-EX48E	FCB-EX48EP
Signal systems	NTSC	PAL	NTSC	PAL	NTSC	PAL	NTSC	PAL	NTSC	PAL
Sync systems	Internal/External (V-lock)									
Image sensor	1/4-type EXview HAD CCD (Progressive Scan)				1/4-type Super HAD CCD II (Interlace Scan)		1/4-type EXview HAD CCD (Progressive Scan)		1/4-type CCD (Interlace Scan)	
Effective picture elements	380,000 pixels (NTSC)	440,000 pixels (PAL)	380,000 pixels (NTSC)	440,000 pixels (PAL)	380,000 pixels (NTSC)	440,000 pixels (PAL)	380,000 pixels (NTSC)	440,000 pixels (PAL)	380,000 pixels (NTSC)	440,000 pixels (PAL)
Lens	36x optical zoom lens f=3.4 mm (wide) to 122.4 mm (tele) F1.6 to F4.5		28x optical zoom lens f=3.5 mm (wide) to 98.0 mm (tele) F1.35 to F3.7				18x optical zoom lens f=4.1 mm (wide) to 73.8 mm (tele) F1.4 to F3.0			
Digital zoom	12 x (432x with optical zoom)		12 x (336x with optical zoom)				12 x (216x with optical zoom)			
Minimum object distance	10 mm (wide) to 1,500 mm (tele), *Default: 320 mm		10 mm (wide) to 1,500 mm (tele) *Default: 300 mm				10 mm (wide) to 800 mm (tele), *Default: 290 mm			
Horizontal viewing angle	57.8 degrees (wide) to 1.7 degrees (tele)		55.8 degrees (wide) to 2.1 degrees (tele)				48.0 degrees (wide) to 2.8 degrees (tele)			
Horizontal resolution	550 TV lines									
Focus systems	Auto (Sensitivity: normal, low), One-push AF, Manual, Infinity, Interval AF, Zoom Trigger AF, Focus Compensation in ICR On Mode									
Minimum illumination	1.4 lx (F1.6, 50IRE)		0.65 lx (F1.35, 50IRE)		0.25 lx (F1.35, 50IRE)		0.7 lx (F1.4, 50IRE)		0.4 lx (F1.4, 50IRE)	
Video output	ANALOG VBS: 1.0 Vp-p (sync negative), Y/C DIGITAL Y/Cb/Cr 4:2:2 (comparable to ITU-R BT656)									
Camera control	VISCA (TTL signal level) Baud rate: 9.6 kbps, 19.2 kbps, 38.4 kbps Stop bit: 1/2 bit selectable									
Electronic shutter	1/1 sec to 1/10,000 sec, 22 steps									
Gain	Auto/Manual/Max. Gain Limit (-3 dB to +28 dB, 2 dB steps)									
Exposure control	Auto, Manual, Priority mode (shutter priority & iris priority), Bright, EV compensation, Slow AE									
EV compensation	Yes									
Backlight compensation	Yes									
White balance	Auto, ATW, Indoor, Outdoor, Outdoor Auto, Sodium Vapor Lamp (fix/auto), One-push, Manual									
S/N ratio	More than 50 dB									
Picture effects	E-Flip, Nega Art, Black & White, Mirror image, Color Enhancement									
Camera operation switch	Yes (Zoom Tele, Zoom Wide)									
Power requirements	DC 6.0 V to 12.0 V									
Power consumption	2.4 W (motors active: 5.1 W)		2.6 W (motors active: 5.0 W)		2.2 W (motors active: 4.6 W)		2.4 W (motors active: 4.4 W)		2.0 W (motors active: 3.1 W)	
Operating temperature	-5°C to +60°C									
Storage temperature	-20°C to +60°C									
Weight	8.1 oz (230 g)		8.4 oz (238 g)				8.1 oz (230 g)			
Dimensions (W x H x D)	2 x 2 3/8 x 3 1/2 inches (50.0 x 57.5 x 87.9 mm)		2 x 2 3/8 x 3 5/8 inches (50.0 x 57.5 x 89.8 mm)				2 x 2 3/8 x 3 1/2 inches (50.0 x 57.5 x 88.5 mm)			
Wide-D Auto mode	Yes		No				Yes		No	
Wide-D IS/PS mode	Yes		No				Yes		No	
Image Stabilization	Yes		Yes				No			
StableZoom	Yes (43x)		Yes (33x)				No			
Digital output	Yes									
Enhanced Noise Reduction	Yes									
Auto ICR	Yes								No	
Spherical Privacy Zone Masking	Yes									
Motion Detection	Yes									
Alarm	Yes									
Slow AE response	Yes (Longer than 10 minutes)									
Picture freeze	Yes									
Slow shutter	Yes									
Temperature readout	Yes									
Title display	Yes (20 characters/line, max. 11 lines)									
Camera mode display	Yes (English*/Chinese) *default									
Key switch control	Yes									
Multi-line OSD	Yes									
E-flip	Yes									
Flicker Cancel	Yes (Auto)	-	Yes (Auto)	-	Yes (Auto)	-	Yes (Auto)	-	Yes (Auto)	-