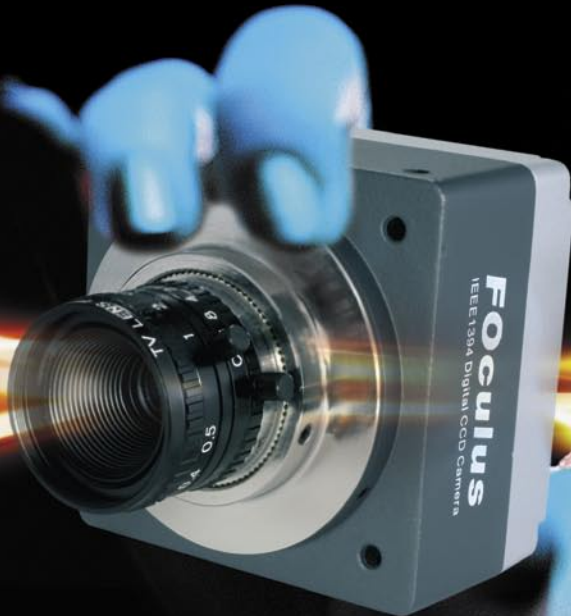


FOculus

Always a new perspective



FO234B/C

FO234B/C

www.net-gmbh.com

IEEE1394 Digital CCD Camera

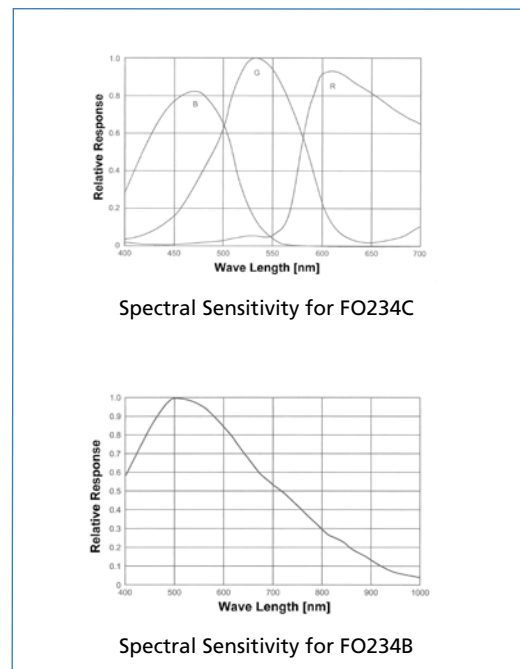
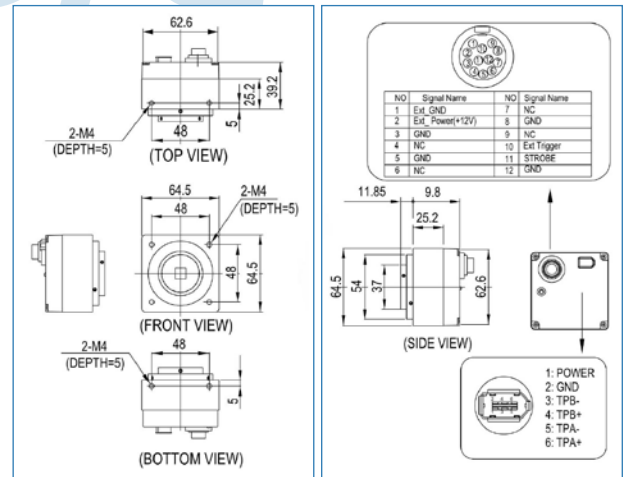
- *1/2" Progressive Scan CCD Image Sensor*
- *Resolution 455,000 (square pixel) SVGA*
- *IEEE1394.a acc. IIDC v.1.3 Interface*
- *FO234B =B/W • FO234C =Color*
- *Hard-/Software Trigger*
- *External Trigger*
- *Framerate 50fps*
- *Camera setting via IEEE1394 Interface*
- *Solid and highly shock-resistant camera casing*
- *Application:*
 - *Machine Vision*
 - *Factory Automation*
 - *Quality Control*
- *Application Software included*
- *SDK optional*


NET
NEW ELECTRONIC TECHNOLOGY

Technical Data

FO234B/C

	FO234B (B/W)	FO234C (Color)
Image Sensor	1/2" IT CCD ICX415AL	1/2" IT CCD ICX415AQ
Effective pixel	455,000 pixel, 782 (H) x 582 (V) SVGA	
Data path	B/W	Raw RGB & RGB
Pixel size	8.30 (H) x 8.30 (V) μm	
Image area	7.48 (H) x 6.15 (V) mm	
Scanning System	Progressive Scan	
Frame rate	50 / 25 / 12.5 / 6.25 / 3 / 1.25 fps	
Synchronization	Internal	
Digital Interface	IEEE1394a	
Software Interf.	Acc. IIDC v. 1.3; format 7	
Gain control	0 ~ 27 dB	0 ~ 25 dB
Gamma	1.0	
Strobe output	Option	
S/N ratio	56 dB or better	
Power supply	8 VDC to + 30 VDC via the IEEE1394 cable	
Power consump.	approx. 225 mA	
Transfer rate	400 Mbps	
Trigger mode	External Trigger	
Shutter Speed	1 μsec - 65 sec	
Gain adjustment	+/- 6dB	
Lens mount	C-mount	
Dimension	64 (W) x 64 (H) x 60 (D)mm / Approx. 300g	



Accessories: • IEEE1394 cable, 6-pin • SDK (Software Development Kit) • OHCI Card • Tripod Adapter Plate • Trigger Cable 12-pin

Contact

New Electronic Technology
Vertriebsgesellschaft mbH
Lerchenberg 7 • D-86923 Finning

Fon +49 8806 92 34-0
Fax +49 8806 92 34-77
info@net-gmbh.com

www.net-gmbh.com

NET USA, Inc.
3037 - 45th Street
Highland, IN 46322

Fon +1 219 934 90 42
Fax +1 219 934 90 47
info@net-usa-inc.com

www.net-usa-inc.com

NET
NEW ELECTRONIC TECHNOLOGY